



Luton Multi-Agency Safeguarding Arrangements

Contents

Name of Arrangements:	3
Details of Arrangements:	3
Guiding principles	3
Values	4
Geographical Area covered by arrangements	4
Luton	4
Local Safeguarding Partners	4
Relevant Agencies	4
Links to Early Years and Education Settings	5
Links to Youth Custody and Residential Homes	5
Governance and Scrutiny Arrangements	6
Voice of Children and Families	10
Child Death Review processes (CDOP)	11
Professional Practice Guidance	11
Dispute resolution:	11
Appendix A	14
Appendix B	20

Name of Arrangements: Luton Safeguarding Children Partnership (LSCP)

Details of how partners will work together to improve the outcomes for children, young people and their families is contained within Appendix A - Terms of Reference.

Details of Arrangements: The arrangements cover the geographical area of Luton Borough Council.

The Luton Multi-Agency Safeguarding arrangements consist of local Luton place based structures and Pan Bedfordshire arrangements which span across Bedfordshire and cover the areas of Central Bedfordshire, Bedford and Luton. The arrangements consist of:

- An independently chaired Safeguarding Children Partnership Strategic Board for Luton, which includes membership from the three safeguarding partners, schools, colleges and other educational establishments (*providing Luton place based strategic direction, leadership and accountability*)
- A Luton Joint Executive Safeguarding Group (*delivering the Luton placed based Business Plan and overseeing the work of the sub groups*)
- A Luton Joint Case Review Group (*overseeing the learning from reviews and its impact for both LSCP and LSAB*)
- A Luton Joint Quality Assurance and Learning Group (*providing scrutiny of performance data, audit and dissemination of learning*)
- A Pan Bedfordshire Co-ordinating Group (*overseeing and coordinating the work of the Pan Bedfordshire sub-groups*)
- A Pan Bedfordshire Children's Strategic Leaders Group (*providing Pan Bedfordshire strategic direction, leadership and accountability*)
- A Pan Bedfordshire Domestic Abuse Children's Strategic Leaders Group
- A set of Core Groups which are the standing sub-groups of the Safeguarding Partnership arrangements:
 - A Pan Bedfordshire Policies and Procedure Group
- A set of sub-groups which relate to the priority areas of the Strategic Partnerships – these may change over time if the priorities change, these groups are:
 - A Pan Bedfordshire Neglect Group
 - A Pan Bedfordshire Safeguarding in Education Group
 - A Pan Bedfordshire Strategic Child Exploitation and Missing Group

A structure chart is shown on page 12:

Guiding principles

The partnership will be driven by:

- Strong, effective multi-agency safeguarding arrangements do not just happen. They demand an active commitment to collaboration and common purpose.

- Effective protection of children and the promotion of their well-being can only be secured through working together.
- Safeguarding arrangements for children and young people being built, sustained, tested and continuously improved.
- Safeguard the rights of vulnerable children consistently across the county but not losing the focus on needs of Luton Borough children and young people.

Values

- All partners to keep the child in focus when making decisions about their lives and work in partnership with them and their families.
- All partners to champion a continuous cycle of learning, to further develop service provision and delivery to support the child and their family
- Duty to co-operate on ALL partners, including all schools, colleges and other educational providers.
- Independent challenge, authority and resource to fulfil both required statutory functions and ensure learning
- That any change is not led by austerity or cuts but by measurable improvements in the safeguarding systems that benefit children, young people and their families

Geographical Area covered by arrangements

Luton



Local Safeguarding Partners

- Luton Borough Council
- Bedfordshire, Luton and Milton Keynes Integrated Care Board (ICB)
- Bedfordshire Police

Relevant Agencies

- All Schools, colleges, other education providers including 16+ providers and alternative learning providers
- Bedfordshire NHS Hospital Trust
- CAFCASS (Children and Family Courts Advisory and Support Service)
- Cambridgeshire Community Services

- East London Foundation Trust
- Luton Council including Adult Social Care, Housing and Public Health
- Luton Youth Offending Service
- National Probation Service
- Representatives from Voluntary and community sectors
- Representatives of Early Years providers
- Up to three lay members

The above relevant partners have been selected as they form part of existing multi-agency safeguarding arrangements in Luton. The existing arrangements are working well with all partners committed to the safeguarding of children in Luton and across the wider county of Bedfordshire.

Details of how partners will work together to improve the outcomes for children and families is contained within Appendix A (Terms of Reference)

[Links to Early Years and Education Settings](#)

The partners recognise the important of ensuring early year's providers and education settings are part of the arrangements.

Currently there are five head teachers on the partnership who were nominated by their peers to represent schools on the Partnership. There is also representation from the Sixth Form College and the local Further Education College. Within the multi-agency safeguarding arrangements there are also several education representatives either from the Luton Council's School Improvement Team or from education settings on the Pan Bedfordshire Safeguarding in Education Subgroup.

Representation from the Early Years is through two routes, from LBC Early Years team and also through the Flying Start projects.

Local schools and colleges are also invited to take part in audits and case reviews where they are relevant. They are also involved in the Section 175 audits and section 11 arrangements.

Safeguarding information is shared via the Designated Safeguarding Leads Forum. The Luton Safeguarding Children Partnership also communicates with schools via the Schools Education Service newsletter.

[Links to Youth Custody and Residential Homes](#)

There are no Youth Custody establishments located in Luton (or in Bedfordshire) .

In relation to residential Homes, the Service Director for Children's Social Care who is responsible for the Corporate Parenting/Looked After Children's Service, is a member of the Luton Safeguarding Children Partnership

Governance and Scrutiny Arrangements

The Governance for the Luton Multi-Agency Safeguarding Arrangements sits with the Statutory Partners Safeguarding Chairs Assurance Group and overseen via the three statutory safeguarding partner's internal structures.

Police – PEEL Partnership

Arrangements for Independent Scrutiny

The Luton Safeguarding Children Partnership is chaired by an Independent Chairperson who is responsible for scrutinising and challenging local partners. The Chair of the Multi-Agency Safeguarding Arrangements in Luton is an independent appointment confirmed by the Chief Officers for the three local safeguarding partners (Luton Borough Council, Bedfordshire Police and Bedfordshire, Luton and Milton Keynes Integrated Care Board) to whom the arrangements are accountable.

The Independent Chair is responsible for scrutinising how effectively the safeguarding arrangements are working for children, families and practitioners, and how well the safeguarding partners are providing strong leadership. The role is objective and acts as a critical friend, promotes reflection and drives continuous improvement. Arrangements for this post are compliant with Working Together 2018.

The Luton Joint Case Review Group which is responsible for taking forward local Child Safeguarding Practice Reviews is also independently chaired.

The Partnership currently has provision for three lay members, their role is not only to act as an ambassadors and assist in building stronger ties with the local community but it is also to scrutinise and challenge practice. A key focus of that role is to ensure accessibility by the public, children and young people of the Partnership's plans and procedures.

The Pan Bedfordshire Co-ordinating Group which is responsible for coordinating and overseeing the work of the Pan Bedfordshire Sub-Groups, is chaired by one of the three Bedfordshire Strategic Partnership Independent Chairs rotated on an annual basis.

Funding Arrangements – updated March 2023

Provider	Approx % contribution	Funding
LBC	57%	£173,850
NHS BLMK ICB	8%	£24,359
Bedfordshire Hospitals University Trust	8%	£24,359
East London Health Foundation	8%	£24,359
Cambridge Community Services	8%	£24,359
National Probation Services	<1%	£1600
Police and Crime Commissioner	9%	£24,359
	Total Contribution	£290,182

Reporting

In order to bring about transparency, the Luton Multi-Agency Safeguarding Arrangements will publish a report at least every 12 months which sets out what has been done as a result of the arrangements, and will include information on child safeguarding practice reviews.

The report will also include:

- Evidence of the impact the Multi-Agency Safeguarding Arrangements have had including information about training and the outcomes for children and families from early help to looked after children and care leavers.
- An analysis of any areas where there has been little or no evidence of progress on agreed priorities.
- A record of decisions and actions taken by the partners in the report's period (or planned to be taken) to implement the recommendations of any local and national child safeguarding practice reviews, including any resulting improvements.
- Ways in which partners have sought and utilised the feedback from children and families to inform their work and influence service provision.

The report will be published on the Safeguarding Partnership's website and a copy will also be sent to the National child Safeguarding Practice Review Panel and the What Works Centre for Children's Social Care within seven working days of being published.

Arrangements for disseminating and embedding Learning from Child Safeguarding Practice Reviews and Multi-Agency Audits

The Luton Multi-Agency Safeguarding Arrangements has in place a Learning and Improvement Framework to help set out a process for continuously improving practice via the learning loop. (The continuous learning loop is shown below) .

The Multi-Agency Safeguarding Arrangements include a Pan Bedfordshire Learning and Improvement and training group which is responsible for following activities related to multi-agency audits:

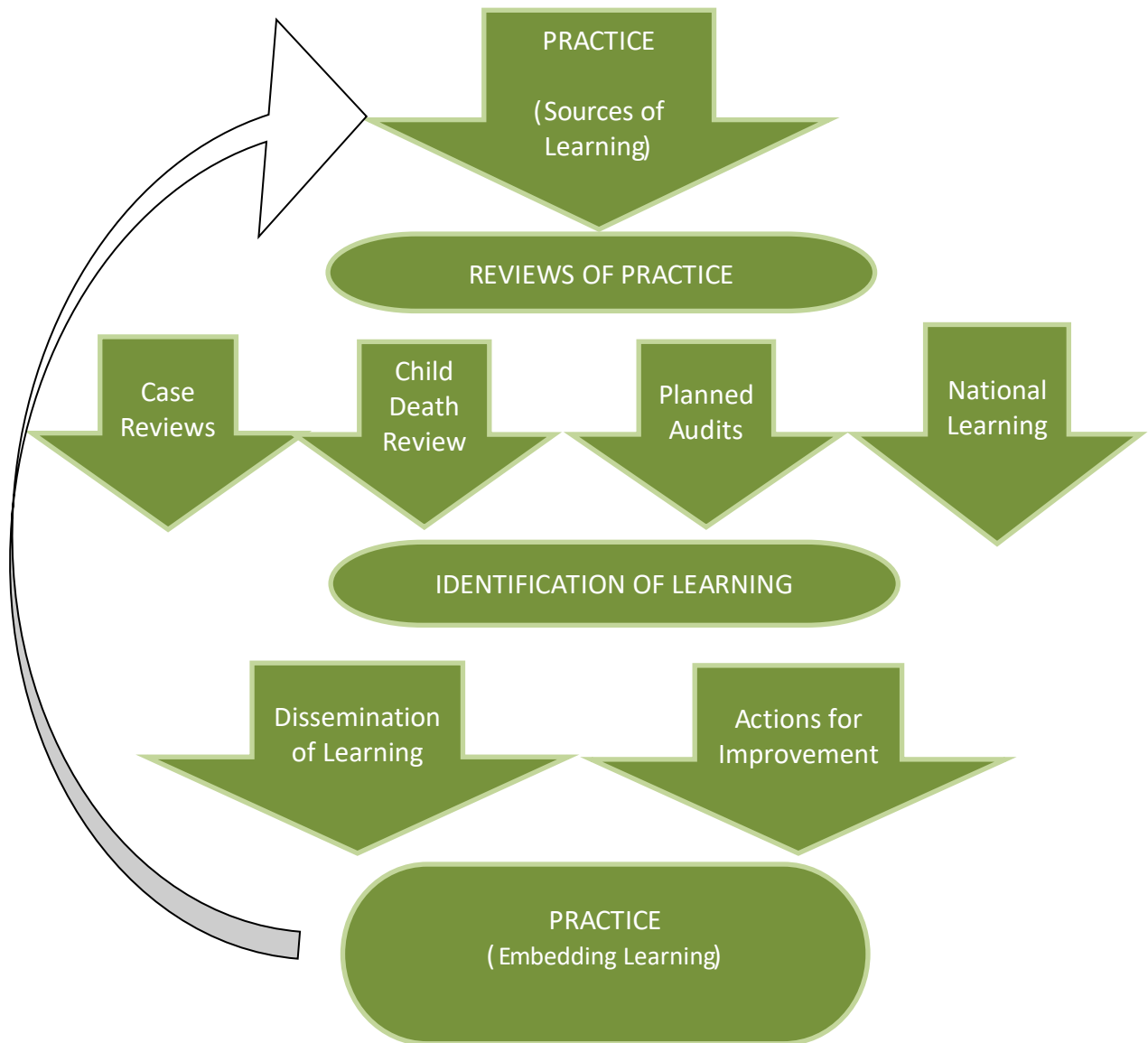
- Delivering the Learning and Improvement Framework
- Developing and agreeing an annual programme of multi-agency audits
- Reviewing safeguarding related audits completed by single agencies
- Ensuring learning from Case Reviews and audits are fed in to training and policies and procedures
- Ensuring actions from multi-agency audits are implemented and where possible outcomes are measured.
- Sharing up to date knowledge of relevant research findings.

Learning from the activities (case reviews and audits) are disseminated using a range of methods including:

- Briefings and Conferences
- Multi-Agency Training Programme and Luton Place based Practice Days
- Newsletters and briefing documents

- Via the LSCP website
- Published Child Safeguarding Practice Reviews
- Single agency training and briefings

Continuous Learning Loop



Luton Learning Improvement Framework

<https://lutonlscb.org.uk/wp-content/uploads/2018/04/3-Learning-Improvement-Framework-Draft-may-17.pdf>

Performance Monitoring Arrangements

The Luton Safeguarding Arrangements have in place a multi-agency performance framework which is monitored and scrutinised by the Partnership, which will:

- a) commission specific performance data related to priorities and
- b) consider issues of performance on safeguarding raised by the MASH sub group.

In addition, performance indicators linked to themes/priority issues are also developed by the priority area sub-groups for discussion and scrutiny within the individual sub-groups.

Arrangements for Commissioning Child Safeguarding Practice Reviews

Appendix B provides details of the Luton process for receiving serious incident notifications and considering and commissioning Child Safeguarding Practice Reviews.

Arrangements for Inter-Agency Training

Multi-agency training across Bedfordshire is organised and commissioned via a Pan Bedfordshire Training Unit funded by the three Local Area Multi-Agency Safeguarding Arrangements.

The Pan Bedfordshire Coordinating Group are primarily responsible for;

- processes in place to identify the multi-agency training and development needs of staff and volunteers in Bedfordshire.
- building on the current joint training and development strategy
- ensuring that the content of the LSCB training programme is based on latest research/clinical evidence about 'what works' when working with children, young people and families.
- ensuring lessons from SCRs, other reviews and audits are disseminated with a view to embed into practice
- overseeing the commission arrangements and ensure relevant and competent trainers are utilised with a broader range of skills
- monitoring and evaluating the quality and impact of training on practice and take appropriate and timely action

Training

The Pan Bedfordshire LSCP training unit offers an extensive range of safeguarding training to people working with children, young people and their families. The programme focuses on the multi-agency challenges of working together.

There is an expectation that individual partners will provide relevant single agency training and induction in order to support their staff have an understanding of relevant practice and policy, and are able to manage safeguarding in an appropriate manner.

The Pan Bedfordshire LSCP training offer focuses on enabling practitioners to develop/enhance the inter-personal, communication, practice and partnership working skills. In addition, the unit will commission events on specific specialist issues including cross cutting themes.

External expertise is commissioned where required to ensure the quality of learning/training. Expertise from across Bedfordshire services is also drawn upon where available to support the learning/training programme.

Evaluation and Impact of training on practice

The unit has a robust approach to evaluating the learning/training delivered through the Pan Bedfordshire Training Unit, measuring both the quality of the training delivered and to evidence the impact on practice. Training is evaluated on:

- The quality of the learning/training (*has it met participants' learning needs and course objectives?*)
- The immediate impact of the learning/training (*has the learning/training had an impact on the participants' knowledge and confidence levels?*)
- What difference are we making? - the longer-term impact of the training (*has the learning/training had an impact on participants' practice and specific outcomes for children and young people?*)

The Pan Bedfordshire LSCP Training Unit provides a quarterly training report for each Safeguarding Arrangement. This report supports the Pan Beds Coordinating Group in developing their quarterly reports to the three Bedfordshire Safeguarding Arrangements.

Voice of Children and Families

As part of the Luton Safeguarding Arrangements the Voice of the Child is a 'golden thread' through the safeguarding arrangements. The Pan Beds Voice of the Child Task and Finish Group is responsible for reviewing how local partners are hearing the voice of children and their families and how they are acting upon this. The group also carries out work directly with young people either through surveys or workshops to gain their views about the safeguarding services they receive. The group also carries out consultation activities usually in the form of focus groups or conferences with practitioners working with young people to gain their views on how systems and processes are working, and their views on the services and support opportunities that are provided to young people and their families.

In addition to the above the safeguarding arrangements hold the following principles:

- All Partnership reports are asked to consider the voice of the child
- All audits consider the voice of the child(ren) and families
- Families are always contacted to participate in local case reviews

Links to local Threshold Guidance

Luton has in place multi-agency guidance Effective Support for Children and Young People related to delivery of the thresholds of needs and support for children and young people.

This guidance is designed for anyone working with children and young people and their families: <http://lutonlscb.org.uk/wp-content/uploads/2022/06/Effective-Support-for-Children-and-Young-People-in-Luton-v0.12-1.pdf>

- To show the criteria for access to services for children based on a multi-agency needs/risk matrix

- To outline the four levels of prevention, need and risk, including safeguarding thresholds
- To set out the key principles for service provision to children, young people and families
- To know what action to take if they are worried about a child's welfare or safety
- To understand what will happen if a child is referred to children's social care
- To outline the threshold between Early Help and Children's Social Care, although in some circumstances both services will be involved.

Child Death Review processes (CDOP)

As per Working Together 2018, Child Death Review processes our child death review partners are Bedford Borough Council, Central Bedfordshire Council, Luton Borough Council and Luton, Bedfordshire and Milton Keynes Integrated Care Board. The statutory requirements and responsibilities for child death review partners are set out in Working Together 2018, Chapter 5 (page 96 -105) .

Bedfordshire and Luton CDOP will produce an annual report for child death review partners on local patterns and trends in child deaths, any lessons learnt and actions taken, and the effectiveness of the wider child death review process in order to assist child death review partners to prepare their report.

Bedfordshire and Luton CDOP in liaison with Milton Keynes CDOP will consider when writing their annual reports whether there are any common themes and learning from the year to undertake joint communication campaigns across Bedfordshire, Luton and Milton Keynes. This will reflect a wider footprint and the Integrated Care System (ICS) across Bedfordshire, Luton and Milton Keynes (BLMK) which includes the BLMK Commissioning Collaborative.

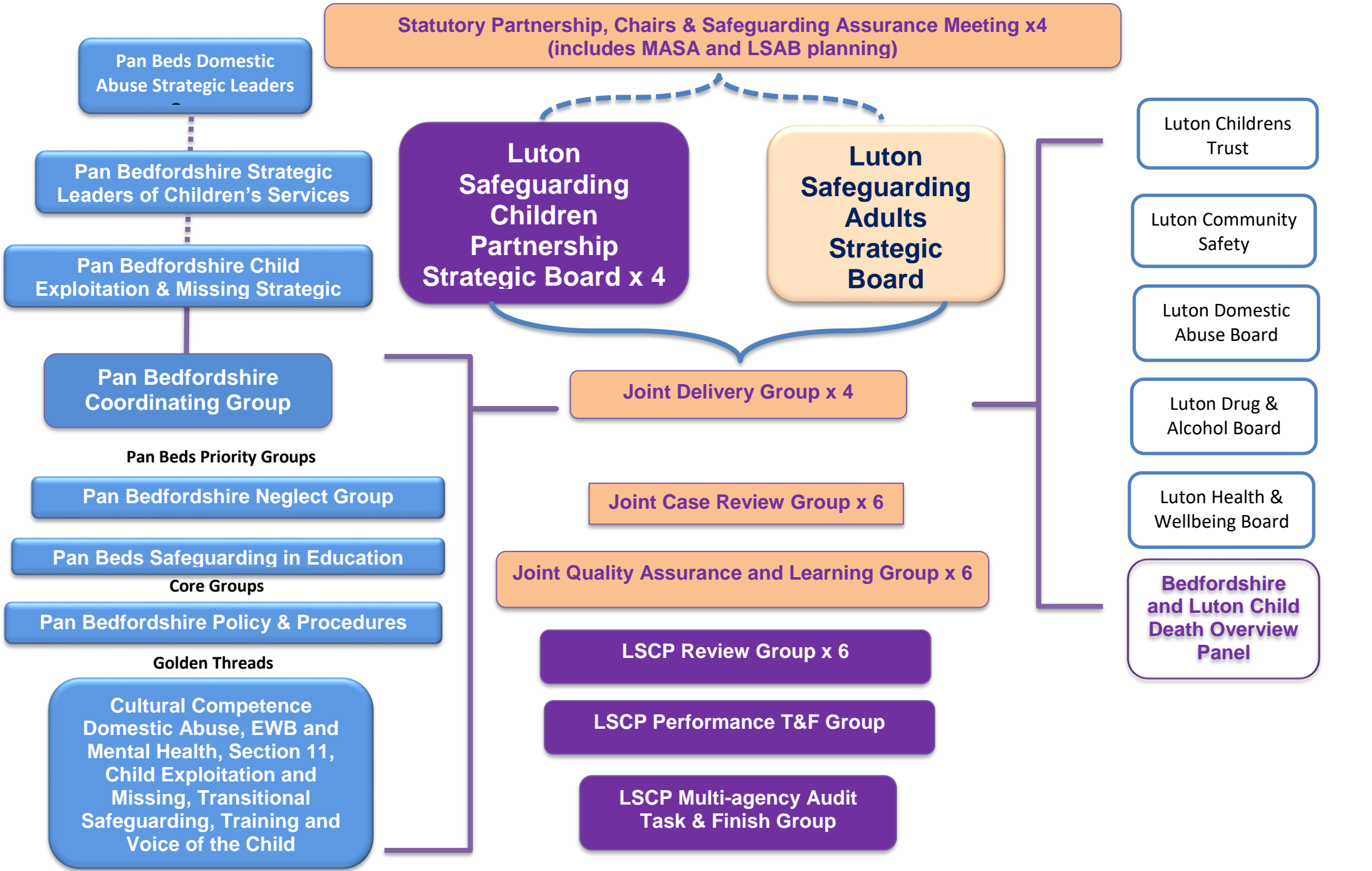
Professional Practice Guidance

All partners will continue to follow the existing Pan Bedfordshire Inter-Agency Procedures. This will underpin expected standardised process and practice across Bedfordshire. Adoption of these procedures will provide consistency to practitioners who are already familiar with these procedures. <http://bedfordscb.proceduresonline.com>

These procedures will be refreshed in accordance with legislative and statutory guidance changes and national and local learning. This will be progressed through the work of the Pan Bedfordshire Policies and Procedures sub group.

Dispute resolution:

Safeguarding partners will work together locally to resolve any disputes. To aid any disputes the Pan Bedfordshire Escalation Procedures have been amended to reflect these new arrangements. Any unresolved disputes will be referred by the safeguarding partners to the Statutory Partnership Chairs and Safeguarding Assurance Meeting.



Denotes a group for the placed based Luton Safeguarding Children Partnership

Denotes a Luton place based joint group between Safeguarding Adults Board and LSCP

Denotes a Pan Bedfordshire Group for the three Safeguarding Children Partnerships

Denotes a place based Luton Group that link but are not part of the LSCP.

Signature of Local Authority Chief Executive

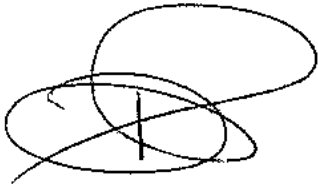
(Robin Porter – Chief Executive, Luton Borough Council)

Signature of the accountable officer for Bedfordshire, Luton and Milton Keynes Integrated Care Board



(Chief Executive, Felicity Cox Bedfordshire, Luton and Milton Keynes ICB)

Signature of the Chief Constable



Dee Perkins

(on behalf of Trevor Rodenhurst – Chief Constable, Bedfordshire Constabulary)

Date:

**Luton Safeguarding Children Partnership
Terms of Reference**

**Luton Multi-Agency Safeguarding Arrangements
as determined by the Children and Social Work Act 2017 and
Working Together to Safeguard Children 2018**

Introduction

Chapter 2, Section 16 of the Children and Social Work Act 2017 requires the safeguarding partners for a local authority area in England and Wales to make arrangements for safeguarding and promoting the welfare of children.

Safeguarding partners

A safeguarding partner in relation to a local authority area in England is defined under the Children Act 2004 (as amended by the Children and Social Work Act, 2017) as:

- a) The local authority (Luton Borough Council)
- b) A clinical commissioning group¹ for an area any part of which falls within the local authority area (Bedfordshire, Luton and Milton Keynes ICB)
- c) The chief officer of police for an area any part of which falls within the local authority area (Bedfordshire Police)

Geographical area

The geographical footprint for the arrangements is based on local authority areas. However, the safeguarding partners for two or more local authority areas may choose to be treated as a single area in relation to the Multi-Agency Safeguarding Arrangements.

The Multi-Agency Safeguarding Arrangements for Luton Borough cover the local authority area of Luton Borough.

Statutory and Legislative Duties

The safeguarding partners for a local authority area in England (listed above) must make arrangements for:

- a) The safeguarding partners, and
- b) Any relevant agencies that they consider appropriate

¹ Replaced by Integrated Care Boards 1st July 2022

To work together for the purpose of safeguarding and promoting the welfare of children, and identifying and responding to the needs of children in the area.

The arrangements must also include a process for identifying and conducting Local Child Safeguarding Practice Reviews:

- a) To identify serious child safeguarding cases which raise issues of importance in relation to the area, and
- b) For those cases to be reviewed under the supervision of the safeguarding partners, where they consider it appropriate.

The purpose of reviews of serious child safeguarding cases is to identify improvements to be made to safeguard and promote the welfare of children. Reviews should help to understand whether there are systemic issues and/or whether policy and practice need to change. Reviews should seek to prevent or reduce the risk of recurrence of similar issues.

Local safeguarding partners must make arrangements to identify and review serious child safeguarding cases which, in their view, raise issues of importance in relation to their area. Local arrangements must commission and oversee the review for those cases where they consider it appropriate that a review be undertaken.

Key functions

The purpose of the local arrangements is to enable local organisations and agencies to work together in a system where:

- Children are safeguarded, and their welfare promoted
- Partner organisations and agencies collaborate, share and co-own the vision for how to achieve improved outcomes for vulnerable children.
- Organisations and agencies challenge appropriately and hold one another to account
- There is early identification and analysis of new safeguarding issues and emerging threats
- Learning is promoted and embedded in a way, that local services for children and families can become more reflective and implement changes to practice.
- Information is shared effectively to facilitate more accurate and timely decision making for children and families

To work together effectively, the arrangements should also:

- Facilitate and drive action beyond usual institutional and agency constraints and boundaries
- Ensure the effective protection of children is founded on practitioners developing lasting and trusting relationships with children and their families.

Within the arrangements, relevant agencies and safeguarding partners will need to:

- Assure themselves that relevant agencies have appropriate and robust safeguarding policies and procedures in place
- Ensure information is shared amongst relevant agencies and the safeguarding partners
- Communicate on a regular basis about the work that they will do together
- Have in place procedures for escalation and resolving disputes.

Relevant Partners/Membership of the Luton Arrangements

Relevant agencies are those organisations and agencies whose involvement the safeguarding partners consider is required to safeguard and promote the welfare of local children.

Within Luton the relevant safeguarding partners have been identified as:

- Independent Chair and Scrutineer
- All Schools, colleges and other educational providers
- Bedfordshire Hospitals NHS Trust
- Bedfordshire Police
- Bedfordshire, Luton and Milton Keynes Integrated Care Board
- CAFCASS (Children and Family Courts Advisory and Support Service)
- Cambridge Community Services
- East London Foundation Trust
- Luton Borough Council including Housing, Children's Services and Public Health
- Luton Sixth form College, and FE College
- Luton Youth Offending Service
- National Probation Service
- Three lay members
- Third sector organisations

Chairing Arrangements

The Luton Safeguarding Children Partnership is chaired by an Independent Chair/Scrutineer who is also a member of their Strategic Board.

Links to other Partnerships

To be effective, the Luton Multi-Agency Safeguarding arrangements for children will need to link into other local partnerships and Partnerships such as:

- Bedfordshire Channel Panel
- Bedfordshire Local Family Justice Partnership
- Bedfordshire MAPPA Panels
- Luton Community Safety Partnership
- Luton Domestic Abuse Partnership
- Luton Drug and Alcohol Partnership

- The Luton Health and Wellbeing Partnership
- The Luton Safeguarding Adult Partnership
- Any Local Improvement Partnerships

Independent scrutiny

The Multi-agency Safeguarding Arrangements must have in place arrangements for independent scrutiny which provide assurance in judging the effectiveness of the multi-agency arrangements to safeguard and promote the welfare of children in the local area. The scrutiny arrangements will also be involved in identifying and reviewing serious child safeguarding cases.

Safeguarding partners will need to ensure that the independent scrutiny arrangements are objective, acts a critical friend, and promotes reflection and drives continuous improvement.

Within Luton, it has been agreed that independent scrutiny will be carried out and overseen by an Independent Chair who is responsible for considering how effectively are safeguarding arrangements working for children, families and practitioners and how well are the safeguarding partners providing strong leadership.

Information sharing

Multi-agency systems are strong when information is shared effectively amongst and between multi-agency partners to improve outcomes for children and families. Safeguarding partners (and therefore their multi-agency arrangements) may require any person or organisation/agency to provide them, any relevant agency for the area, a reviewer or another person or organisation/agency with specified information. This must be information which enables and assists the safeguarding partners and their arrangements to perform their functions to safeguard and promote the welfare of children in their area, including information related to local and national child safeguarding practice reviews.

As public authorities the safeguarding partners should be aware of their own responsibilities under relevant information law and have regard to guidance provided by the Information commissioner's Office when issuing and responding to requests for information.

Governance and Accountability

The lead representatives for the local safeguarding partners have equal and joint responsibility for putting in place the local Multi-Agency Safeguarding Arrangements, within Luton these are:

- The Chief Executive of Luton Borough Council
- The Accountable Officer of the Bedfordshire, Luton and Milton Keynes Integrated Care Board
- The Chief Constable for Bedfordshire Police

In situations where a clear and single point of leadership is required, the three safeguarding partners will decide who will take the lead.

If the lead representatives chose to delegate their functions they remain accountable for any actions or decisions taken on behalf of their agency. It is the responsibility of the lead representative to identify and nominate a senior officer in their agency to have responsibility and authority for ensuring full participation in the local arrangements.

The representative or their chosen delegated officer should be able to:

- Speak with authority for the safeguarding partner they represent
- Take decisions on behalf of their organisation or agency and commit them on policy, resourcing and practice matters
- Hold their own organisation or agency to account on how effectively they participate and implement the arrangements.

Multi-Agency Safeguarding Structure and Sub-Groups

The Luton Multi-Agency Safeguarding arrangements consist of local Luton place based structures and Pan Bedfordshire arrangements which span across Bedfordshire and cover the areas of Central Bedfordshire, Bedford and Luton. The arrangements consist of:

- An independently chaired Safeguarding Children Partnership Strategic Board for Luton, which includes membership from the three safeguarding partners, schools, colleges and other educational establishments (*providing Luton place based strategic direction, leadership and accountability*)
- A Luton Joint Executive Safeguarding Group (*delivering the Luton LSCP and LSAB placed based Business Plans and overseeing the work of the sub groups*)
- A Luton Joint Case Review Group (*overseeing the learning from reviews and its impact for both LSCP and LSAB*)
- A Luton Joint Quality Assurance and Learning Group (providing scrutiny of performance data, audit and dissemination of learning)
- A Pan Bedfordshire Co-ordinating Group (*overseeing and coordinating the work of the Pan Bedfordshire sub-groups*)
- A Pan Bedfordshire Children's Strategic Leaders Group (*providing Pan Bedfordshire strategic direction, leadership and accountability*)
- A Pan Bedfordshire Domestic Abuse Children's Strategic Leaders Group
- A set of Core Groups which are the standing sub-groups of the Safeguarding Partnership arrangements:
 - A Pan Bedfordshire Policies and Procedure Group
- A set of sub-groups which relate to the priority areas of the Strategic Partnerships – these may change over time if the priorities change, these groups are:
 - A Pan Bedfordshire Neglect Group
 - A Pan Bedfordshire Safeguarding in Education Group
 - A Pan Bedfordshire Strategic Child Exploitation and Missing Group

Reporting

In order to bring about transparency the safeguarding partners must publish a report at least every 12 months which sets out what has been done as a result of the arrangements including information on child safeguarding practice reviews and how the arrangements have been in practice. The report should also include:

- Evidence of the impact the Multi-Agency Safeguarding Arrangements have had including information about training and the outcomes for children and families from early help to looked after children and care leavers.
- An analysis of any areas where there has been little or no evidence of progress on agreed priorities.
- A record of decisions and actions taken by the partners in the report's period (or planned to be taken) to implement the recommendations of any local and national child safeguarding practice reviews, including any resulting improvements.
- Ways in which partners have sought and utilised the feedback from children and families to inform their work and influence service provision.

The report should be widely available, and a copy of the report should also be sent to the National child Safeguarding Practice Review Panel and the What Works Centre for Children's Social Care within 7 working days of being published.

Publication of arrangements

The Multi-Agency Safeguarding Arrangements will be published in accordance with Working Together 2018.

Dispute resolution

Safeguarding partners will work together to resolve any disputes locally.

Funding

Funding for the Multi-Agency Safeguarding Arrangements including covering the costs of local child safeguarding practice reviews will be agreed by the local safeguarding partners. Funding arrangements should be equitable and proportionate.

A review will take place within the year of 2023/24 – to be reported back to the Strategic Board by August 2023 for funding arrangements to be agreed ready for April 2024.

Child Safeguarding Practice Review Flowchart

